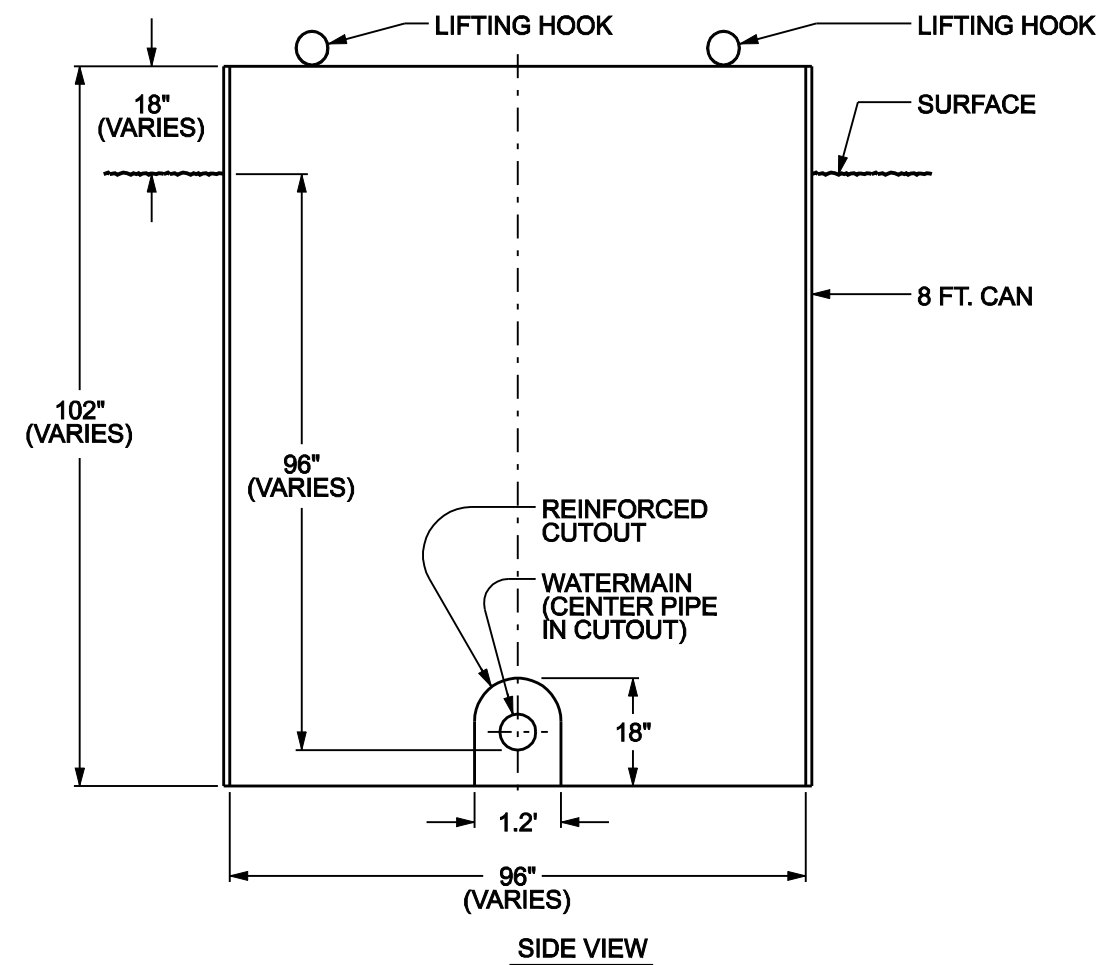
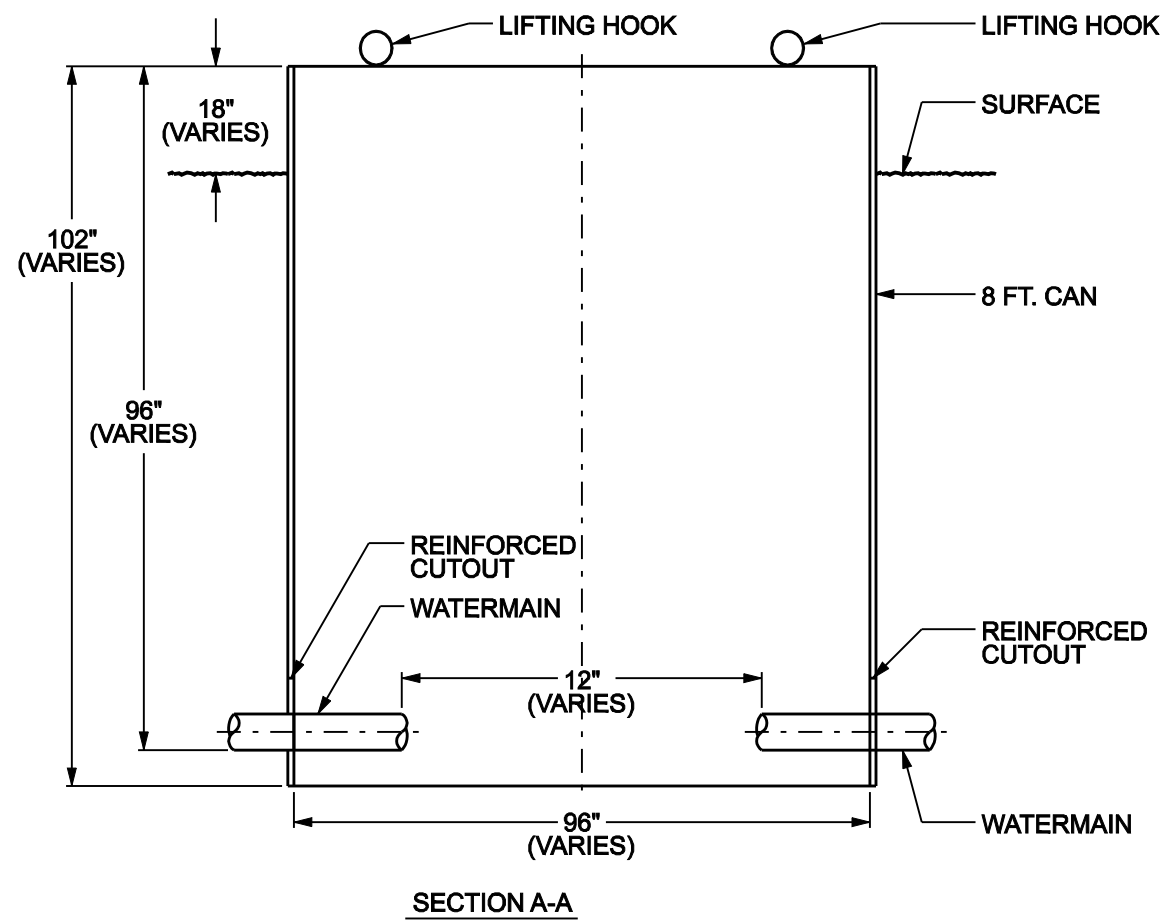


**NOTES:**

1. THE SHIELDS SHALL BE SPIRAL CORRUGATED STEEL WITH THICKNESS OF 0.109 INCH.
2. THE CORRUGATED STEEL SHALL HAVE A 5" PITCH AND 1" DEEP CORRUGATIONS.
3. THE CORRUGATED STEEL SHALL BE COATED WITH A 2-OZ. GALVANIZED COATING.
4. ALL CUTS MADE TO THE CORRUGATED PIPE SHALL BE GROUND SO THAT THERE ARE NO EXPOSED SHARP EDGES.
5. REINFORCING FOR CUT OUTS SHALL BE #4 STEEL REINFORCING RODS WELDED TO THE OUTSIDE AND INSIDE ALONG THE CUT EDGE OF THE LENGTH OF THE CUT OUT.



	DRW: JAS	DATE: 2/22/16	<p align="center">CLEANING AND LINING CAN</p>	<p align="center">STANDARD PLATE NO. WATR-3002</p>
	APP: CMD	DATE: 2/22/16		

NOT TO SCALE